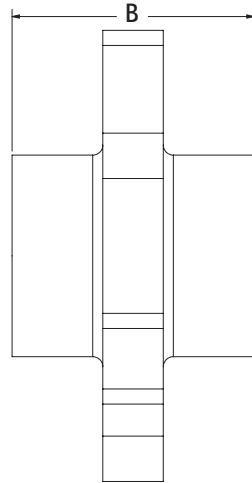
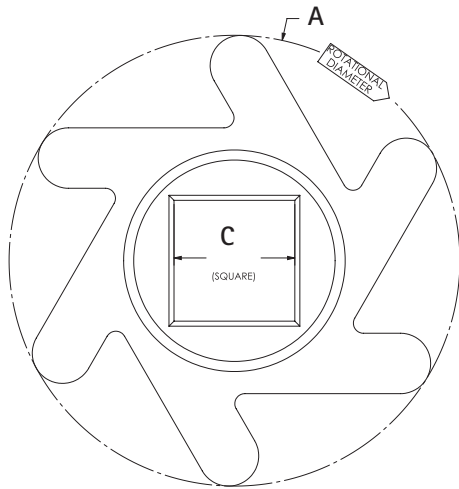
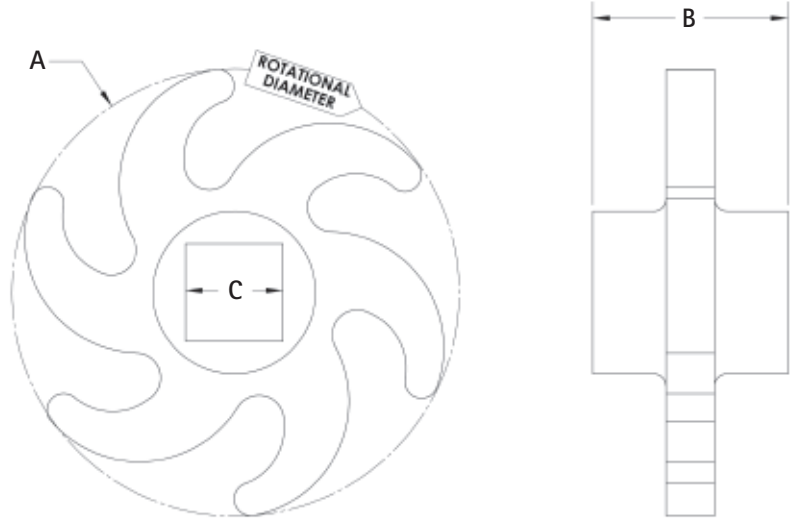


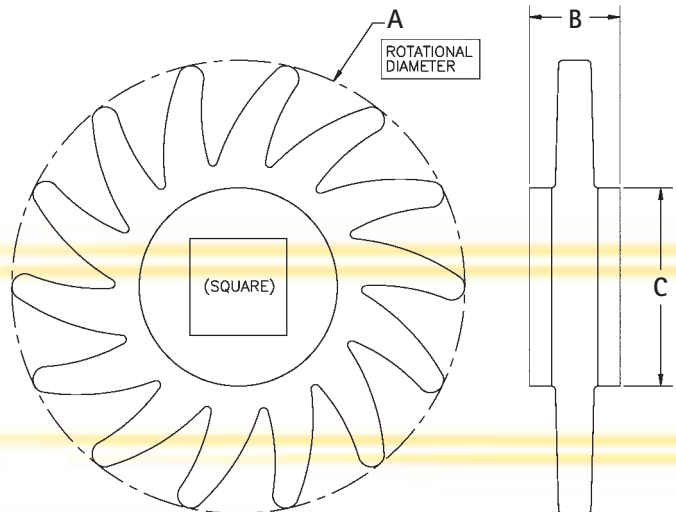
Urethane Six Finger Roller
AG-RF061253065U



Six Finger Roller
AG-RF0612553



Fourteen Finger Roller
AG-RF1412580



Today's faster, more advanced agricultural machinery demands the superior properties delivered by Kryptane Systems' urethane finger roller technology. Kryptane Systems' urethane finger rollers are developed hand-in-hand with harvesting equipment advances. Flexible urethane finger rollers minimize bruising, provide less sticking and build up, and deliver superior mud shedding properties. When you choose Kryptane rollers, you get the best in harvesting performance with the durability that you expect.

RUBBER FINGER ROLLERS

		A	B	C
FIVE FINGER	PART NUMBER	FINGER DIA.	HUB WIDTH	SQ. SHAFT OPENING
	AG-RF051252852	5"	2-3/4"	1-1/4"
	AG-RF051252865	6-1/2"	2-3/4"	1-1/4"
SIX FINGER	PART NUMBER	FINGER DIA.	HUB WIDTH	SQ. SHAFT OPENING
	AG-RF0612553	5-1/2"	3"	1-1/4"
	AG-RF0615053	5-1/2"	3"	1-1/2"
	AG-RF063512553	5-1/2"	3-1/2"	1-1/4"



POLYURETHANE FINGER ROLLERS

		A	B	C		
SIX FINGER	PART NUMBER	DESCRIPTION	FINGER DIA.	HUB WIDTH	SQ. SHAFT OPENING	FINGERS
	AG-RF061253065U	FINGER ROLLER SWEPT	6.50"	3.00"	1.25"	6
	AG-RF061503065U	FINGER ROLLER SWEPT	6.50"	3.00"	1.50"	6
	AG-RF0612553U	FINGER ROLLER STRAIGHT	5.30"	3.00"	1.25"	6
	AG-RF0615053U	FINGER ROLLER STRAIGHT	5.30"	3.00"	1.50"	6
	AG-RF062712553U	FINGER ROLLER STRAIGHT	5.30"	2.75"	1.25"	6
FOURTEEN FINGER			A	B	C	
	PART NUMBER	DESCRIPTION	FINGER DIA.	HUB WIDTH	SQ. SHAFT OPENING	FINGERS
	AG-RF1412580	FINGER ROLLER SWEPT	6.50"	1.38"	1.25"	14
	AG-RF1415080	FINGER ROLLER SWEPT	6.50"	1.38"	1.50"	14